

Inductive sensor

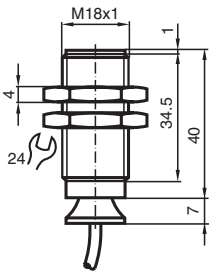
NJ8-18GK-N-150-10M



- 8 mm non-flush
- Temperature range
-40 ... 150 °C (-40 ... 302 °F)
- NAMUR output



Dimensions



Technical Data

General specifications		
Switching function		Normally closed (NC)
Output type		NAMUR
Rated operating distance	s_n	8 mm
Installation		non-flush
Assured operating distance	s_a	0 ... 6.48 mm
Reduction factor r_{Al}		0.4
Reduction factor r_{Cu}		0.3
Reduction factor r_{304}		0.85
Output type		2-wire
Nominal ratings		
Nominal voltage	U_o	8.2 V (R_i approx. 1 k Ω)
Switching frequency	f	0 ... 200 Hz
Current consumption		
Measuring plate not detected		min. 3 mA
Measuring plate detected		\leq 1 mA
Functional safety related parameters		

Release date: 2024-10-09 Date of issue: 2024-10-09 Filename: 70133187_eng.pdf

Refer to "General Notes Relating to Pepperl+Fuchs Product Information".

Pepperl+Fuchs Group
www.pepperl-fuchs.com

USA: +1 330 486 0001
fa-info@us.pepperl-fuchs.com

Germany: +49 621 776 1111
fa-info@de.pepperl-fuchs.com

Singapore: +65 6779 9091
fa-info@sg.pepperl-fuchs.com

 PEPPERL+FUCHS

Technical Data

MTTF _d	4542 a	
Compliance with standards and directives		
Standard conformity		
NAMUR		EN 60947-5-6:2000 IEC 60947-5-6:1999
Standards	EN IEC 60947-5-2	
Approvals and certificates		
IECEX approval		
Equipment protection level Ga		IECEX PTB 11.0037X
Equipment protection level Gb		IECEX PTB 11.0037X
Equipment protection level Da		IECEX PTB 11.0037X
Equipment protection level Mb		IECEX PTB 11.0037X
ATEX approval		
Equipment protection level Ga		PTB 00 ATEX 2048 X
Equipment protection level Gb		PTB 00 ATEX 2048 X
Equipment protection level Da		PTB 00 ATEX 2048 X
UL approval		
Ordinary Location		E87056
Hazardous Location		E501628
Control drawing		116-0452
CCC approval		
Hazardous Location		2020322315002257
CML approval		on request
ANZEx		18.3018X
Ambient conditions		
Ambient temperature	-40 ... 150 °C (-40 ... 302 °F)	
Mechanical specifications		
Connection type	cable	
Housing material	PPS	
Sensing face	PPS	
Degree of protection	IP65	
Cable		
Cable diameter	4.8 mm ± 0.2 mm	
Bending radius	> 10 x cable diameter	
Material	SIHF	
Core cross section	0.34 mm ²	
Length	L	10 m
Dimensions		
Length	47 mm	
Diameter	18 mm	
General information		
Use in the hazardous area	see instruction manuals	

Connection

